



WÜST

WÜST CHIPPERS

Highest quality in chipping construction ensures a long service life and utmost chip quality at low operating costs.

WÜST

The WÜST company was founded by Karl Wüst in 1977. During the first few years, the company mainly offered a repair service for construction equipment and agricultural machines. The growing demand for log wood transport solutions in the forest and transport sector pushed Karl Wüst to assemble cranes onto trucks. In no time, Wüst gained good reputation and increased their stock of new customers.

In the early nineties, they started repairing wood chippers. Karl Wüst was convinced that he could build such machinery much better. Finally, his pioneering spirit drove him to construct his first wood chippers. After a myriad of tests, Wüst offered the first marketable wood chippers.

Soon, the wood fuel market and thus the demand for wood chippers increased quickly, so that Wüst further developed and enlarged their chipper range continuously. Nowadays, the company has a wide range of chippers for various superstructure variants and fields of application. Today, WÜST stands for high-quality and rugged Swiss chipper quality.

In September 2019, WÜST started a cooperation with the German chipper manufacturer ALBACH Maschinenbau

in the sectors of vehicle construction, sales and service.

This partnership combines the different experiences of both companies. Thus, our customers highly benefit from the further development of our machines.

From now on, WÜST AG is responsible for the sales, service and central spare parts supply of ALBACH machinery in the Switzerland whereas ALBACH Maschinenbau adds 3-axle truck superstructure chippers and towed wood chippers to their portfolio. ALBACH uses its sales channels for the sale, service and central spare parts supply of the complete range of WÜST machines outside the Switzerland.

Together with our long-term committed staff from 10 different professions we endeavour to offer our customers excellent works and optimal solutions for wood chippers, wood transport vehicles and special superstructures.



CHIPPING UNITS

Both Wüst chipping units are available as towed units or as directly driven truck superstructures.

Wüst chippers convince by their well calibrated chips with a low share of fine material. The powerful feeder of the chipping units allows for the chipping of bulky tree tops. Thanks to the rugged construction and solid spherical roller bearings of the chipper drum, even frozen hard wood can easily be processed.

The relation between rotor dimension and infeed size as well as the number of cutters and the cutter arrangement ensure a very good throughput at optimal fuel consumption.

BBHK Type	Infeed size	Knife system
BBHK-100	60cm x 100cm	5 pcs. 200mm
BBHK-120	60cm x 120cm	6 pcs. 200mm

Rotor diameter : 800mm
Drive power from : 200HP

WPC Type	Infeed size	Knife system
WPC-712	70cm x 120cm	6 pcs. 200mm

Rotor diameter : 900mm
Drive power from : 350HP

SMC Type	Infeed size	Knife system
SMC-812	80cm x 120cm	6 pcs. 200mm

Rotor diameter : 950mm
Drive power from : ab 350HP

INFEED

The infeed unit is equipped with a large upper roller with interchangeable blades, two lower rollers with aggressive teeth and a leakage system with separator.



The infeed table is fitted with folding side walls to save space.



Upper infeed roll with interchangeable blades

ACCELERATOR / SPOUT

The accelerator can be mounted in the centre or at the rear, as desired.

The hydraulic accelerator is continuously variably adjustable for optimal goods flow and develops a very high ejection performance so that chip silos can be easily filled in forward and backward direction and with lowered spout front.



Volvo FMX, 540 HP with BBHK-120, mechanically driven fan, ejector spout arranged at the rear



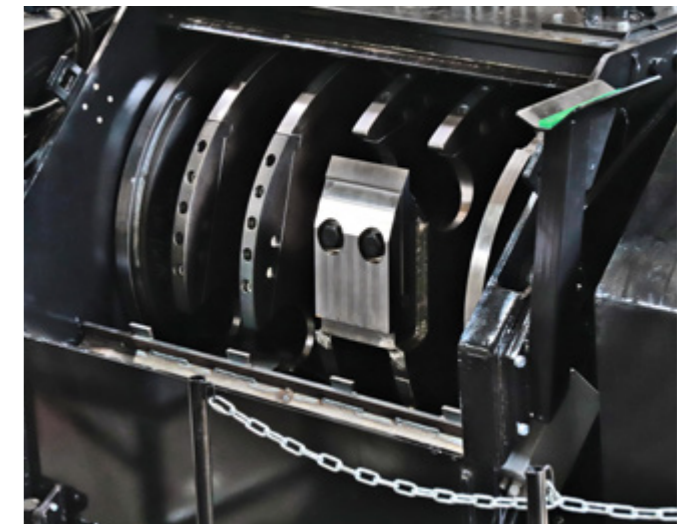
Volvo FMX, 540 PS with SMC-812, hydraulically driven accelerator, centrally arranged ejector spout

MAINTENANCE PLATFORM

The chipper is very low maintenance thanks to the hydraulic platform, all required maintenance connections, divided screens, cutters with external screw connections and the crane for replacing the screen.



Maintenance platform with hydraulic folding



The SMC-812 has a rotor with a 200 mm cutter system, fitted with a depth limiter for variable cutting lengths of 15 - 45 mm.

PTO SHAFT CHIPPERS



BBHK-120 towed by a Fendt 1050 with reverse-drive system



BBHK-120



BBHK-100

TRUCK CHIPPERS



Volvo FMX, 540 PS with SMC-812



Volvo FH with WPC-712 (concept)



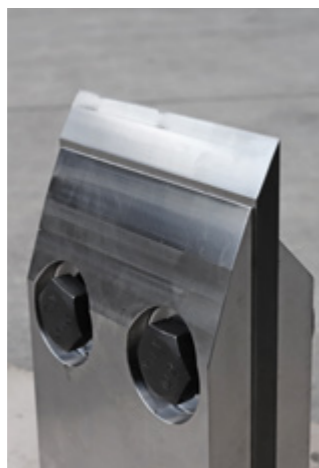
Volvo FMX, 540 HP with BBHK-120

KNIFE AND BLADE-SYSTEM

The machines can be equipped with a knife or blade system.



Blade with adapter
(quick-change system)



Knife
(quick-change system)

SPLITTER

As an option a very powerful log splitter can be attached. With a split-height of 1150 mm and a pressure of 50 tons it enhances the machine considerably, because the location can be worked off without any leftover wood.



Log splitter



CONTROL

The chippers are controlled via a CAN bus display control unit with touch-screen which can be controlled with additional digital signals (push-button joystick or pedal switch). The control accuracy of the control unit ensures continuously well-structured chips at high throughput and optimal fuel consumption. The machine operator can continuously variably adjust infeed speed and, for machines with hydraulic accelerators, also rotation speed.

Using a hand-held transmitter, a second operator can even control the ejector pipe and self-dependently load the chips. Thus, the machine operator is supported and can put his focus on feeding the chipper.



CAN-bus-display



Hand-held transmitter



Workplace

VEHICLE

We are your competent partner when it comes to equipping your transport vehicle. Thanks to our long-term experience, we can offer you excellent advice and individual solutions for log superstructures, trailers for wood transport, crane superstructures in general and trailer construction. In 2019, Wüst took over the production, sales and service of ANDRES self-steering trailers. Thus, we can further enlarge our range in the sector of log trucks and offer complete solutions from one source.



Wüst self-steering trailer sL-24

PRODUCTION AND SERVICE



REPAIR / SERVICE

Our highly trained team of mechanics repairs and revises various construction, agricultural and forestry machines. If necessary, our service vehicles can also accomplish on-the-spot repair work at short notice.

SPARE PARTS

Due to our extensive supply of spare parts and in-house production of special parts, we can ensure the supply of spare parts in no time.

HYDRAULICS BASE

For more than 25 years we have been running our own hydraulics base. We offer a stock of special-purpose and standard fittings. Thus we are in the position to satisfy almost any customer requests competently and promptly. Furthermore, we have a variety of standard cylinders, sealing kits and joint heads in stock so that we can produce new cylinders without any delays. Special cylinders and individual components for cylinders are produced at our in-house mechanical department.

MECHANICAL WORKSHOP

Our machine park for machining includes conventional and controlled machinery. We are equipped for the production of individual parts and small lots thus achieving a very high degree of in-house production.





WÜST MASCHINEN- UND FAHRZEUGBAU AG
HOLZMATT 656 // CH-3537 EGGIWIL // SWITZERLAND
WWW.WUEST-HACKER.CH